



Access Audit Checklist

Marshside Primary Access Audit

Complete

Score	91 / 102 (89.22%)	Flagged items	0	Actions	5
-------	-------------------	---------------	---	---------	---

Audit Title	Marshside Primary Access Audit
Client / Site	Marshside Primary
Conducted on	30 Jan 2024
Prepared by	Compliance Education
Location	Southport PR9 9XA, UK (53.6736151, -2.9697733)

Actions

5 actions

Audit

D01. Is each corridor/passageway/aisle wide enough for a wheelchair user to manoeuvre and for other people to pass?

No

The corridor near nursery is narrow which will make it difficult for a person in a wheelchair to get around and in and out of the classrooms.

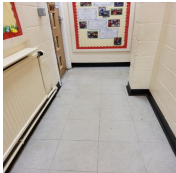


Photo 8

To do | Assignee: Compliance Education | Priority: Low | Due: 30 Jul 2024 14:30 BST | Created by: Compliance Education

Accessibility to Nursery

As the corridor near nursery is narrow careful consideration is needed before granting a child with mobility issues a place within your school. This could simply entail the pupil with their parent completing an orientation visit.

Audit

D02. Is each corridor, etc, free from obstruction to wheelchair users and from hazards to people with impaired vision?

No

To do | Assignee: Compliance Education | Priority: Low | Due: 30 Jul 2024 13:49 BST | Created by: Compliance Education

Replace Table

One intervention class was using a large table located near the hall. The table was encroaching on the corridor.

Audit

G08. Is wheelchair approach free of steps/narrow doors/obstructions, etc?

Yes

To do | Assignee: Compliance Education | Priority: Low | Due: 30 Jul 2024 14:08 BST | Created by: Compliance Education

Storage

The medical room/disability toilet needs to be kept free from obstructions

Audit

G12. Is there an emergency call system and is someone designated to respond?

No

To do | Assignee: Compliance Education | Priority: Low | Due: 30 Jul 2024 14:12 BST | Created by: Compliance Education

Identify

I was unable to locate a red pull cord due to the amount of stock in the room awaiting removal

Audit

J02. Are final exit routes as accessible to all, including wheelchair users, as are the entry routes?

No

To do | Assignee: Compliance Education | Priority: Low | Due: 30 Jul 2024 14:24 BST | Created by: Compliance Education

Door Step

There is a slight lip or step which some wheelchair users may find difficult to get over.

Audit

5 actions, 91 / 102 (89.22%)

A01. Is the building within convenient distance of a public highway?

Yes

The school is situated on Elswick Road.



Photo 1

A02. Is the building within convenient distance of public transport?

Yes

A local bus service passes near to the school



Photo 2

A03. Is the building within convenient distance of car parking?

No

The school has a staff only car park located to the side of the school. Parents and visitors are required to park on the public highway.

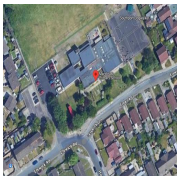


Photo 3

A04. Is the route clearly marked/found?

N/A

A05. Is the route free of kerbs?

No

Dropped kerb tactile paving pedestrian crossing are located near each road junction and on the kerb near the school gate



Photo 4

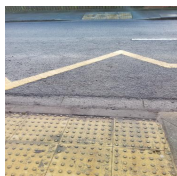


Photo 5

A06. Is the surface smooth and slip resistant?

Yes

A07. Is the route wide enough?

Yes

A08. Is it free of such hazards as bollards, litter bins, outward opening windows and doors or overhanging projections?

Yes

There is a pedestrian rail located directly in front of the main front gate to protect children from running straight out on to the road.

A09. Is it adequately lit?

Yes

Street lights and the school have several Thorlux path lights leading from the main gate to the main reception.

A10. Is it identified by visual, audible and tactile information?

Yes

A11. Is there car parking for people with reduced mobility?

Yes

A12. Is the car parking clearly marked out, signed, easily found and kept free from misuse?

Yes

A13. Is the car parking as near the entrance as possible?

Yes

The staff only car park is located to the side of the building

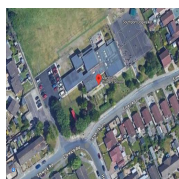


Photo 6

A14. Is the car parking area suitably surfaced?

Yes

A15. Is the route to the building kept free of snow, ice and fallen leaves?

Yes

A16. Is the route level? (ie. no gradient steeper than 1:20 and no steps)

Yes

B01. Is there a ramp, with level surfaces at top/intermediate/bottom?

N/A

B02. Is it wide enough and suitably graded?

N/A

B03. Is the surface slip resistant?

N/A

B04. Are there kerbs and are there edges protected to prevent accidents?


N/A

B05. Are there handrails to one or both sides?

N/A

B06. If a permanent ramp (or regraded levels) cannot be formed (perhaps to a Listed Building) is a portable ramp

N/A

available?	
B07. Are there (alternative) steps?	N/A
B08. Identified by visual/tactile information?	N/A
B09. Are there handrails to one or both sides?	N/A
B10. Are ramps and steps adequately lit?	N/A
B11. Are treads and risers consistent in depth and height?	N/A
B12. Are all nosings marked and/or readily identifiable?	N/A
B13. Are landings of adequate size and are they provided at intermediate levels in long flights?	N/A
B14. If safe and convenient ramps and steps cannot be provided is vertical movement by powered means an alternative?	N/A
C01. Is the door clearly distinguishable from the facade? 	Yes
Photo 7	
C02. If glass is it visible when closed?	Yes
C03. Does the clear door opening or one leaf when opened permit passage of a wheelchair or double buggy?	Yes
C04. Does it have a level or flush threshold, and a recessed matwell?	Yes
C05. Is there visibility through the door/way from both sides at standing and seated levels?	Yes
C06. Is there a minimum 300mm wide wheelchair manoeuvre space beside the leading edge of the door to clear doorswing?	Yes
C07. Can the door furniture be used at both standing and seated height?	Yes
C08. Can it be easily grasped and operated?	Yes

C09. If the door has a closer mechanism does it have:

(a) delayed closure action?	N/A
(b) slow-action closer?	N/A
(c) minimal closure pressure?	N/A
C10. If the door is power-operated does it have visual and tactile information?	N/A
C11. If the door is security-protected is the system suitable for use by and within reach of people with sensory or mobility impairments?	Yes
There is a green door release button located on the wall	
C12. If there is a lobby, do the inner and outer doors meet the same criteria?	Yes
C13. Do lobby layouts enable all users to clear one door before going through the next?	Yes
C14. Are signs designed and positioned to inform those with visual impairments and wheelchair users with reduced eye-levels?	Yes
C15. Does the lighting installation take account of the needs of visually disabled people?	Yes
C16. Are floor surfaces:	
(a) slip-resistant, even when wet?	Yes
(b) of a quality that is sympathetic to acoustics – i.e. not so “hard” as to cause acoustic confusion?	Yes
(c) firm for wheelchair manoeuvre?	Yes
C17. Are junctions between floor surfaces arranged in a way that avoids presenting tripping hazards and causing visual confusion?	Yes
C18. Is any reception point suitable for approach and use from both sides by people in standing and seated positions?	Yes
The height of the reception window falls within the parameters for wheelchair use of 26 to 36 inches.	
C19. Is it fitted with an induction loop?	No

C20. If public telephone is available (say at reception, is it, and its instructions):

(a) at a height suitable for all users?	N/A
---	-----

(b) equipped with inductive coupling?	N/A
---------------------------------------	-----

C21. For those progressing to other parts of the building is information provided by signs, supported by tactile information such as a map or model?

No

No tactile information is available

D01. Is each corridor/passageway/aisle wide enough for a wheelchair user to manoeuvre and for other people to pass?

No

The corridor near nursery is narrow which will make it difficult for a person in a wheelchair to get around and in and out of the classrooms.

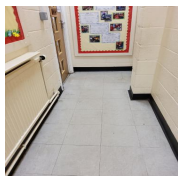


Photo 8

To do | Assignee: Compliance Education | Priority: Low | Due: 30 Jul 2024 14:30 BST | Created by: Compliance Education

Accessibility to Nursery

As the corridor near nursery is narrow careful consideration is needed before granting a child with mobility issues a place within your school. This could simply entail the pupil with their parent completing an orientation visit.

D02. Is each corridor, etc, free from obstruction to wheelchair users and from hazards to people with impaired vision?

No

To do | Assignee: Compliance Education | Priority: Low | Due: 30 Jul 2024 13:49 BST | Created by: Compliance Education

Replace Table

One intervention class was using a large table located near the hall. The table was encroaching on the corridor.

D03. Do any lobbies allow users, (inc. w.ch. users) to clear one door before approaching the next with minimal manoeuvre?

Yes

D04. Is turning space available for w.ch. users?

Yes



Photo 9

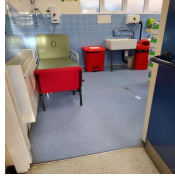


Photo 10

D05. Do natural and artificial lighting avoid glare and silhouetting?

Yes

D06. Are there visual clues for orientation?

Yes

The flooring along the main corridor changes colour and texture.

D07. Do floor surfaces:

(a) allow ease of movement for wheelchair users?

Yes

(b) avoid light reflection and sound reverberation?

Yes

D08. Do textured surfaces convey useful information for people with impaired vision?

Yes

The flooring along the main corridor changes colour and texture.

D09. Are direction or information signs (inc means of escape) visible from both sitting and standing eye levels, and are they in upper and lower case, and large enough type to be read by those with impaired vision?

Yes

D10. Are there tactile signs and information for those with impaired vision?

No

D11. Is the maintenance of these items checked regularly?

Yes

D12. Is lighting designed to meet a wide range of needs?

Yes

D13. Is sufficient circulation space allowed for wheelchair users?

No

The corridor near nursery is narrow which will make it difficult for a person in a wheelchair to get around and in and out of the classrooms.

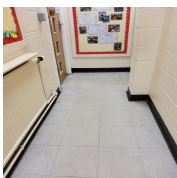


Photo 11

D14. Is it maintained clear of obstructions which could create hazards for people with visual disabilities?

Yes

D15. Are seating arrangements/spaces suitable for use by people with visual disabilities?	Yes
D16. Are all areas for assembly/meeting equipped with an induction loop system?	N/A
D17. If the use of an induction loop system is precluded is an infra-red system in place?	N/A
D18. Is the functioning and operation of the induction loop or infra-red system checked regularly?	N/A
D19. Are telephones fitted with inductive loop couplers?	N/A
D20. Is a minicom available for use by people with hearing disabilities?	N/A
E01. Is the location of any step/stairs/ramp clearly indicated by use of sign/colour/contrast/texture fighting? (delete)	N/A
E02. Does any step/stairs/ramp have a handrail to to one/both side(s), and do(es) it/they extend 300mm beyond the top and bottom of any flight? (delete)	N/A
E03. Is any level change clearly lit?	N/A
E04. Is the pitch (risers & treads) of step/stairs or any ramp consistent, and are nosings clearly identifiable? (delete)	N/A
E05. If there are landings are they large enough to permit passing and turning manoeuvres, and are they provided in any long flight?	N/A
E06. Is any short rise within a single storey ramped; if so is the ramped surface indicated, and is it slip-resistant?	N/A
E07. Are all ramp gradients easily negotiated? [Range length 3m max = 1 in 12, 6m max = 1 in 26, 10m max = 1 in 20]	N/A
E08. If a permanent ramp cannot be provided (perhaps a listed Building) can a moveable ramp be made available?	N/A
E09. Are steps available as an alternative to any ramp or ramped surface?	N/A
E10. Where level change is less than a full storey in height is a power-operated system appropriate? (Platform Lift/Stairlift/Lift)	N/A

E11. Platform Lift

(a) Are the controls at both levels identifiable, and reachable from sitting and standing levels? (delete)	N/A
(b) Is the platform adequate for wheelchair use and manoeuvre.	N/A
(c) In the event of a power failure does the platform return to lower level?	N/A
(d) Is the equipment maintained and its operation checked regularly?	N/A

E12. Stairlift

(a) Are the controls at all levels identifiable, and reachable from sitting and standing levels?	N/A
(b) Is the platform adequate for wheelchair use and manoeuvre?	N/A
(c) Is approach convenient and safe at all appropriate landings?	N/A
(d) Does the stairlift have a 'Soft-Start' action?	N/A
(e) When not in use is the platform powered to fold away to avoid obstruction?	N/A
(f) In the event of a power failure does the platform return to lower level?	N/A
(g) Is the equipment maintained and its operation checked regularly?	N/A

E13. Lift

(a) Is the lift's location clearly defined by visual and tactile information?	N/A
(b) Are controls at all floors visible, identifiable and reachable from sitting and standing levels?	N/A
(c) Is there adequate, unobstructed space at each floor lift entry for wheelchair manoeuvre?	N/A
(d) Does the lift door open widely enough for wheelchair user access?	N/A
(e) Does door operation allow slow entry and exit?	N/A

(f) Do the lift car internal dimensions allow sufficient space for a wheelchair user and carer?	N/A
(g) Does the car have appropriate support rails?	N/A
(h) Are the lift car controls, inc. emergency call, located within reach of all users and with visual and tactile information?	N/A
(i) Is there audible floor indication?	N/A
(j) Is the lift an 'Evacuation Lift'?	N/A
(k) Is the lift regularly maintained and its functional operation routinely checked?	N/A
F01. Do the doors serve a functional/safety purpose?	Yes
F02. Can they be readily distinguished?	Yes
F03. If glass, are they visible when shut?	Yes
F04. Can people standing or sitting in a wheelchair see each other, and be seen from either side of the door?	Yes
F05. Does the clear opening width permit wheelchair access?	Yes
F06. On the opening side of the door is there sufficient space (300mm) to allow the door handle to be grasped and the door swung past a wheelchair footplate?	Yes
F07. Is any door furniture/handle at a height for standing/sitting use?	Yes
F08. Are door/handles clearly distinguished?	Yes
F09. Can the door furniture/handles be easily operated/grasped?	Yes
F10. If door closers/mechanisms are fitted do they provide the following:	
(a) security linkage?	Yes
(b) delay-action closure?	Yes
(c) slow-action closure?	Yes
(d) minimum closure pressure?	Yes


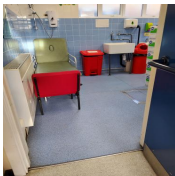

F11. Is door/mechanism function checked regularly?	Yes
G01. Is WC provision made for people with disabilities? There is a separate toilet located in the first aid room. <div>   </div> <div> Photo 12 Photo 13 </div>	Yes
G02. Do all lavatory areas have slip-resistant floors?	Yes
G03. Are they easy to distinguish by colour contrast from walls?	Yes
G04. Are all fittings readily distinguishable from their background?	Yes
G05. Are all door fittings/locks easily gripped and operated?	Yes
G06. Can ambulant disabled people manoeuvre and raise and lower themselves in standard cubicles? A fold down assistant rail is available either side of the toilet <div>  </div> <div> Photo 14 </div>	Yes
G07. Is provision made for wheelchair users? If so:	Yes
G08. Is wheelchair approach free of steps/narrow doors/obstructions, etc?	Yes
To do Assignee: Compliance Education Priority: Low Due: 30 Jul 2024 14:08 BST Created by: Compliance Education	
Storage The medical room/disability toilet needs to be kept free from obstructions	
G09. Is the location clearly signed?	Yes
G10. Is there sufficient space at entry to the compartment for wheelchair manoeuvre and door opening?	Yes



Photo 15

G11. Are the door fittings/locks and light switches easily reached and operated?

Yes

G12. Is there an emergency call system and is someone designated to respond?

No

To do | Assignee: Compliance Education | Priority: Low | Due: 30 Jul 2024 14:12 BST | Created by: Compliance Education

Identify

I was unable to locate a red pull cord due to the amount of stock in the room awaiting removal

G13. Can the emergency call system be operated from floor level?

No

G14. Is the wheelchair WC compartment large enough to permit manoeuvre for frontal lateral/angled/backward transfer, with or without assistance?

Yes

G15. Are the fittings arranged to facilitate these manoeuvres?

Yes

G16. Are handwashing and drying facilities within reach of someone seated on the WC?

Yes



Photo 16

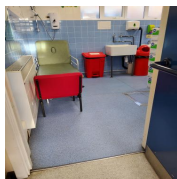


Photo 17

G17. Is the tap appropriate for use by someone with limited dexterity, grip or strength?

Yes

G18. Are suitable grab rails fitted in all the appropriate positions to facilitate use of the WC?

Yes

Fold away hand rails



Photo 18

G19. Is the manoeuvring area free of obstruction, eg boxed-in pipework/radiators/cleaner's equipment/disposal bins/ occasional storage, etc., and is any difficulty caused by the activity of service contractors?	Yes
G20. If there is more than one standard layout WC compartment provided, are they handed to offer a left-sided approach and a right-sided approach?	N/A
H01. Is any servery/counter accessible to all users, including those with hearing impairments?	Yes
H02. If the building has fixed seating are there also associated spaces for wheelchair users and at regular intervals on long routes?	N/A
H03. Is it possible for wheelchair users and people with other disabilities to approach and use all vending machines/drinking water dispensers, etc?	Yes
Drinking water dispensers are low down	
H04. Is it possible for people with disabilities to serve as volunteers?	Yes
So long as the person will not be located in nursery	
H05. Are all fittings readily distinguishable from their background?	Yes
H06. Where there are display stands, bookstalls etc. are they visible/reachable/accessible by people with disabilities?	Yes
H07. In any eating/meeting space do tables, chairs and the layout allow for use by wheelchair users and other people with disabilities?	Yes
H08. In any staff accommodation is it suitable for use by people with disabilities including wheelchair users, with slip-resistant floor, reduced level kitchen units and sink and lever action taps?	Yes
H09. Are all relevant locations clearly signed?	Yes
I01. Is the building equipped to provide hearing assistance?	Yes
I02. Does lighting installation of the building take into account the needs of people with visual disabilities?	Yes
I03. Is there a tactile plan or diagram of the building?	N/A
I04. Are there large-print versions of information about the building/activities available?	Yes

I05. Is there 'braille' information available for people with visual disabilities?	N/A
I06. Is there an 'audio' version of information about the building available?	N/A
I07. Where there are staff available in the building at information/refreshment facilities, are they trained in communication with people with physical and sensory disabilities?	Yes
I08. Where a payphone is provided does it have a hearing aid coupler?	N/A
I09. Are all relevant locations clearly signed?	Yes
J01. Is there a visible as well as audible fire alarm system?	N/A
J02. Are final exit routes as accessible to all, including wheelchair users, as are the entry routes?	No
To do Assignee: Compliance Education Priority: Low Due: 30 Jul 2024 14:24 BST Created by: Compliance Education	
Door Step There is a slight lip or step which some wheelchair users may find difficult to get over.	
J03. Is evacuation from upper and lower levels possible using an evacuation lift/platform lift with a protected power supply?	N/A
J04. If people with disabilities cannot evacuate from the building independently are designated and signed refuges available?	N/A
The school is on one level	
J05. If refuges are available are they equipped with 'carry chairs'?	N/A
J06. Is there a 'management evacuation strategy' for staff, pupils and visitors, and are staff trained in evacuation procedures?	Yes
J07. Is the evacuation strategy checked regularly for its effectiveness?	Yes
Termly fire drills	
J08. Are evacuation routes checked routinely and regularly for freedom from combustible materials/obstacles/locked doors?	Yes

J09. Are all fire warning devices and detectors checked routinely and regularly?

Yes

Sign Off

On site representative

Natasha Sandkand
30 Jan 2024 14:28 GMT

Auditor's signature

Gillian Marshall
30 Jan 2024 14:28 GMT

Media summary



Photo 1



Photo 2



Photo 3



Photo 4



Photo 5



Photo 6



Photo 7

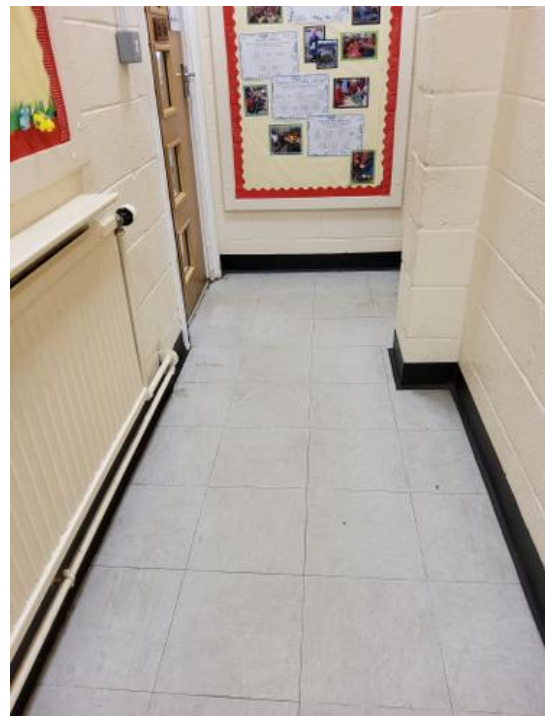


Photo 8



Photo 9

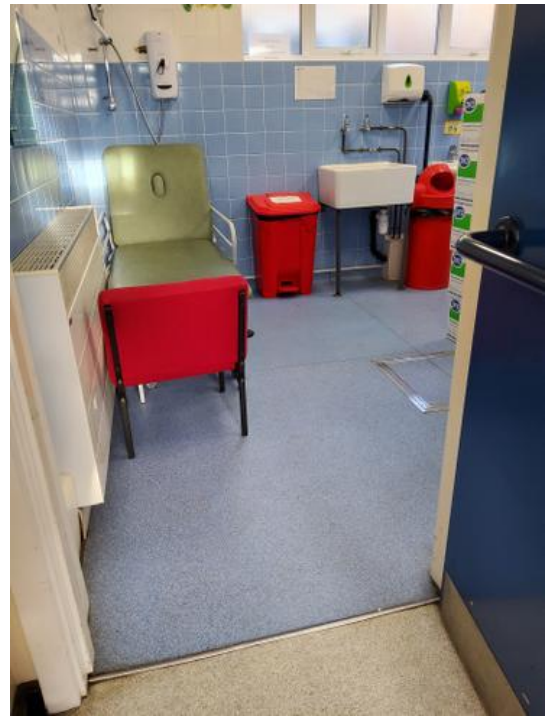


Photo 10



Photo 11



Photo 12



Photo 13



Photo 14



Photo 15



Photo 16



Photo 17



Photo 18